

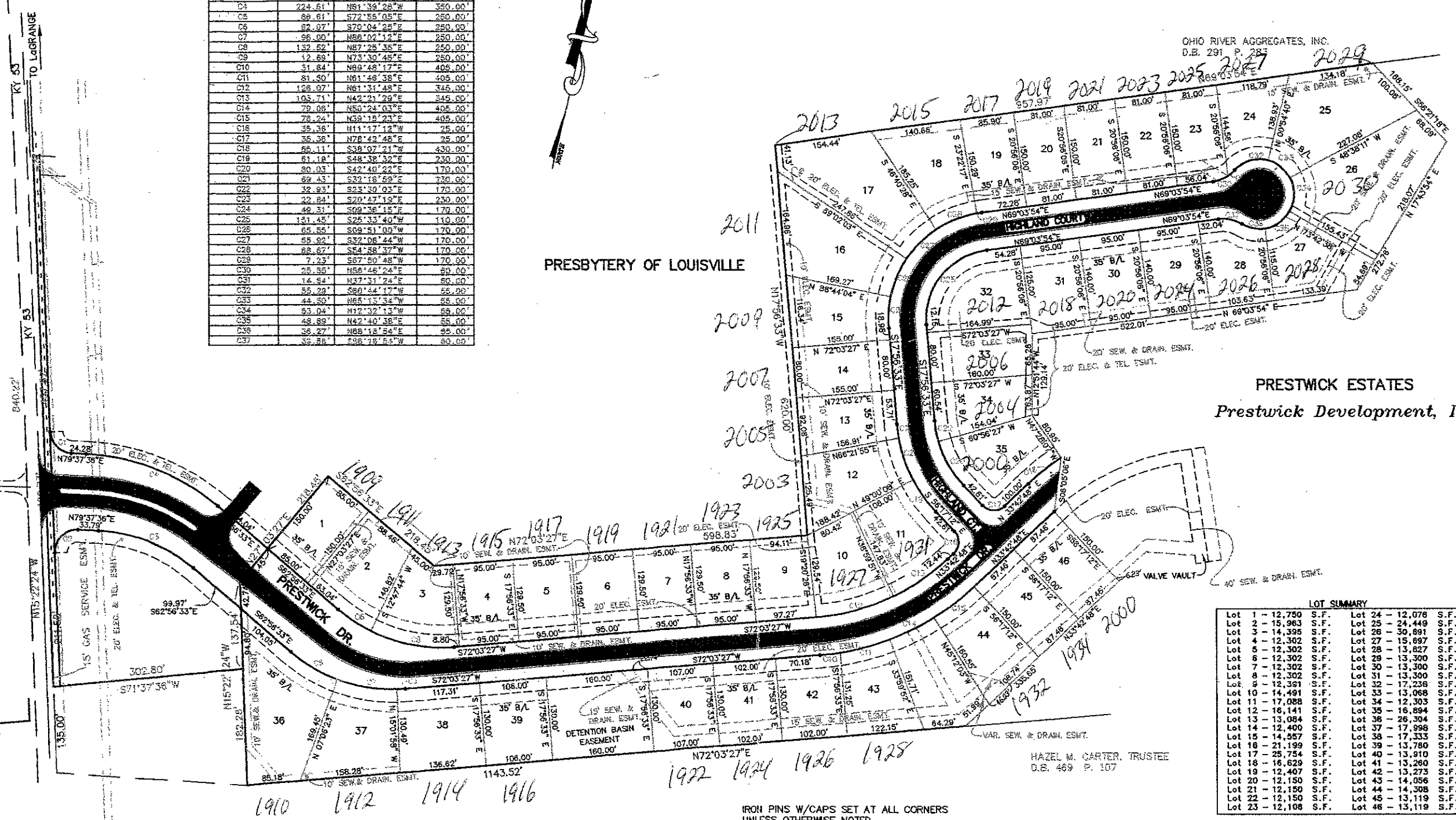
CURVE TABLE			
CURVE NO.	CHORD	BEARING	RADIUS
C1	47.29'	S57°27'24"E	35.00'
C2	51.51'	S72°07'36"W	35.00'
C3	189.43'	N81°39'28"W	249.99'
C4	224.51'	N61°39'28"W	350.00'
C5	89.61'	S72°55'08"E	250.00'
C6	82.97'	S70°04'28"E	250.00'
C7	96.00'	N88°02'12"E	250.00'
C8	132.52'	N87°28'35"E	250.00'
C9	12.68'	N73°30'45"E	250.00'
C10	51.84'	N69°48'17"E	405.00'
C11	81.40'	N61°46'38"E	405.00'
C12	126.97'	N61°31'48"E	345.00'
C13	103.71'	N42°21'29"E	345.00'
C14	79.08'	N50°24'03"E	405.00'
C15	78.24'	N38°15'23"E	405.00'
C16	35.36'	N11°17'12"W	25.00'
C17	35.36'	N78°42'48"E	25.00'
C18	55.11'	S38°07'21"W	430.00'
C19	61.19'	S48°38'32"E	230.00'
C20	80.03'	S42°40'22"E	170.00'
C21	62.43'	S32°18'58"E	230.00'
C22	32.93'	S23°30'03"E	170.00'
C23	22.94'	S20°47'13"E	230.00'
C24	49.31'	S09°38'15"E	179.00'
C25	131.45'	S25°33'40"W	110.00'
C26	65.55'	S08°51'00"W	170.00'
C27	55.92'	S27°08'44"W	170.00'
C28	68.67'	S54°38'37"W	170.00'
C29	7.23'	S67°50'48"W	170.00'
C30	25.35'	N58°46'24"E	80.00'
C31	14.94'	N37°31'24"E	50.00'
C32	55.28'	S60°44'17"W	55.28'
C33	44.50'	N65°13'34"W	55.00'
C34	53.04'	N12°32'13"W	89.00'
C35	48.89'	N42°40'38"E	55.00'
C36	59.27'	N68°18'54"E	95.00'
C37	35.28'	S68°18'54"W	90.00'



PRESBYTERY OF LOUISVILLE

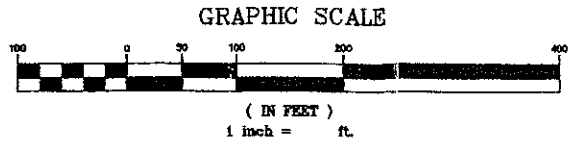
OHIO RIVER AGGREGATES, INC.
D.B. 291 P. 287

PRESTWICK ESTATES
Prestwick Development, Inc.



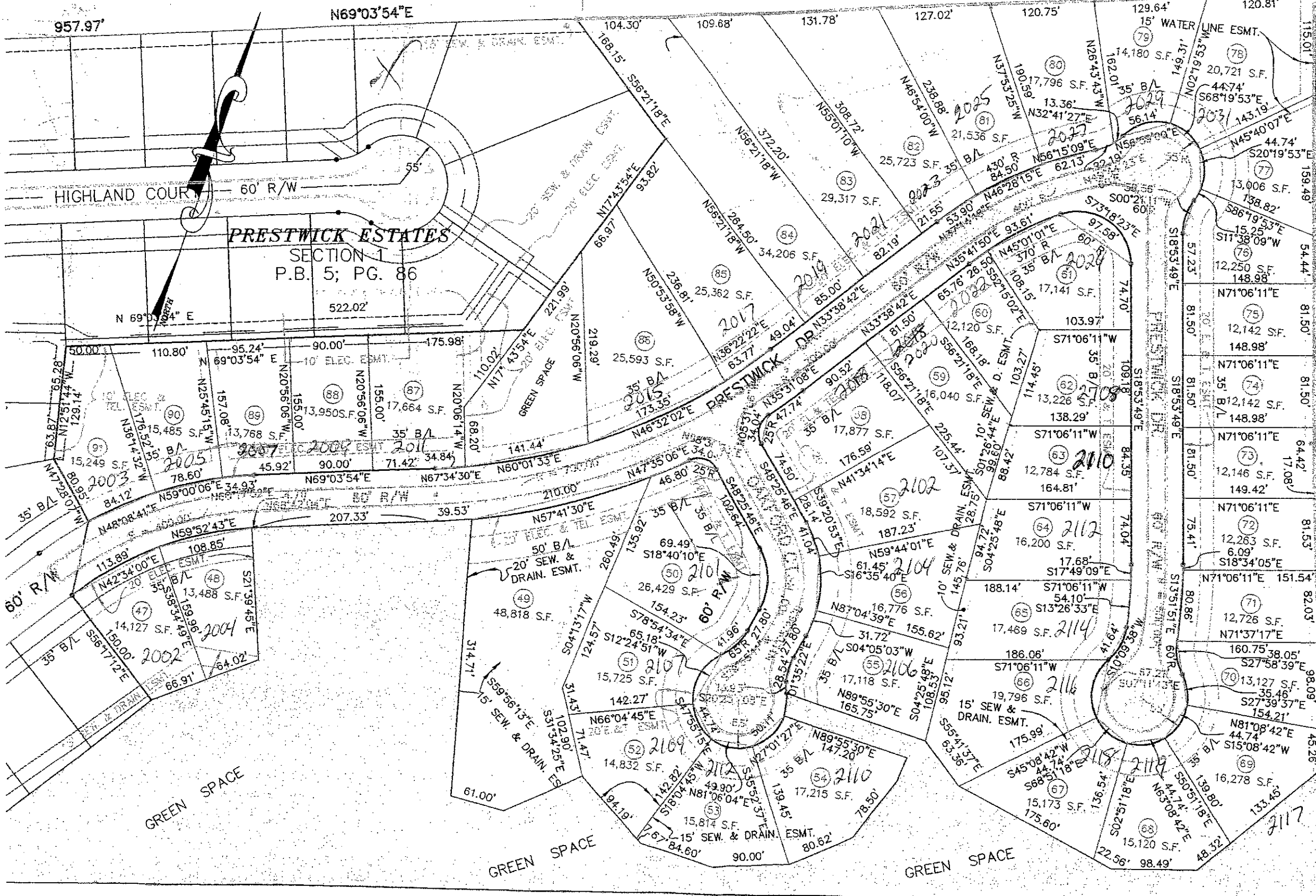
LOT SUMMARY		
Lot 1 - 12,750 S.F.	Lot 24 - 12,076 S.F.	
Lot 2 - 15,963 S.F.	Lot 25 - 24,449 S.F.	
Lot 3 - 14,395 S.F.	Lot 26 - 30,891 S.F.	
Lot 4 - 12,302 S.F.	Lot 27 - 15,697 S.F.	
Lot 5 - 12,302 S.F.	Lot 28 - 13,827 S.F.	
Lot 6 - 12,302 S.F.	Lot 29 - 13,300 S.F.	
Lot 7 - 12,302 S.F.	Lot 30 - 13,300 S.F.	
Lot 8 - 12,302 S.F.	Lot 31 - 13,300 S.F.	
Lot 9 - 12,302 S.F.	Lot 32 - 17,236 S.F.	
Lot 10 - 14,491 S.F.	Lot 33 - 13,068 S.F.	
Lot 11 - 17,088 S.F.	Lot 34 - 12,303 S.F.	
Lot 12 - 16,141 S.F.	Lot 35 - 16,894 S.F.	
Lot 13 - 13,084 S.F.	Lot 36 - 26,304 S.F.	
Lot 14 - 12,400 S.F.	Lot 37 - 17,998 S.F.	
Lot 15 - 14,557 S.F.	Lot 38 - 17,333 S.F.	
Lot 16 - 21,199 S.F.	Lot 39 - 13,780 S.F.	
Lot 17 - 25,754 S.F.	Lot 40 - 13,910 S.F.	
Lot 18 - 16,629 S.F.	Lot 41 - 13,280 S.F.	
Lot 19 - 12,407 S.F.	Lot 42 - 13,273 S.F.	
Lot 20 - 12,150 S.F.	Lot 43 - 14,056 S.F.	
Lot 21 - 12,150 S.F.	Lot 44 - 14,308 S.F.	
Lot 22 - 12,150 S.F.	Lot 45 - 13,119 S.F.	
Lot 23 - 12,108 S.F.	Lot 46 - 13,119 S.F.	

IRON PINS W/CAPS SET AT ALL CORNERS
UNLESS OTHERWISE NOTED.



CENTERFIELD ENGINEERING, INC.
Civil Engineering - Surveying
508 222-1008
FAX 222-1009

PRESTWICK ESTATES
SECTION 1
La GRANGE, KY 40031



PRESTWICK ESTATES
SECTION 1
P.B. 5; PG. 86

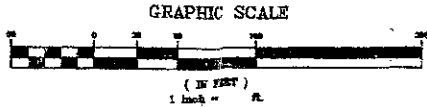
HIGHLAND COURT 60' R/W

60' R/W

GREEN SPACE

GREEN SPACE

GREEN SPACE



2101
2103
2105
2107
2109
2111
2113
2115

PRESTWICK ESTATES
SECTION 2
La GRANGE, KY 40031